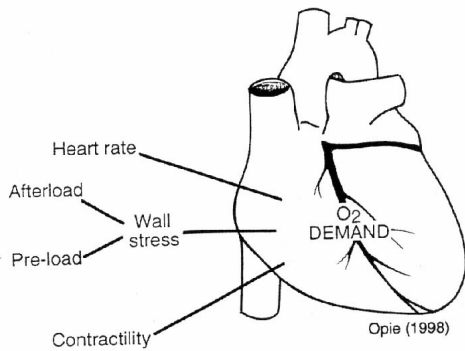


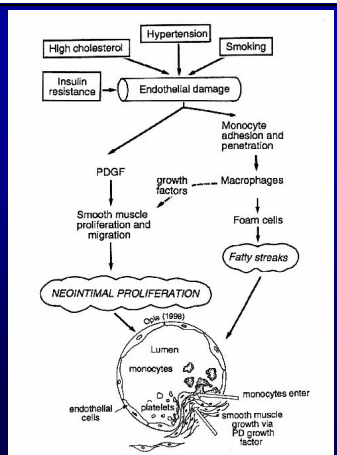
Myocardial ischaemia, myocardial infarction, and new ischaemic syndromes

Dr. Zoltán Papp
UD Department of Cardiology
Division of Clinical Physiology

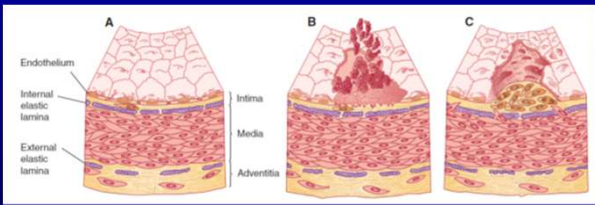
Determinants of myocardial O₂ demand



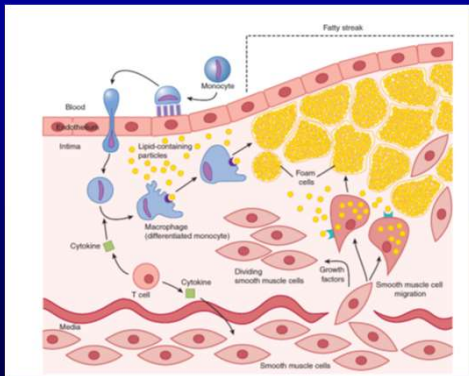
Coronary artery disease and plaque formation



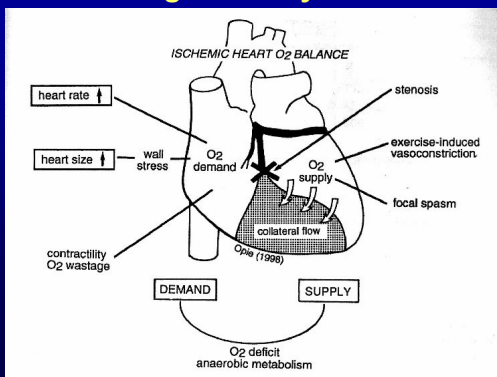
Mechanisms of production of atheroma



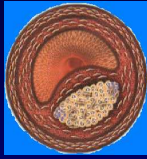
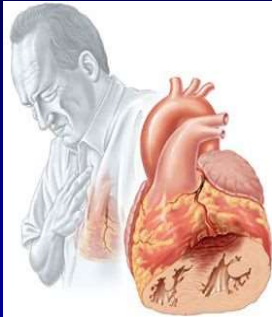
Formation of a fatty streak in an artery



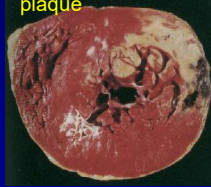
Determinants of myocardial O₂ demand during coronary stenosis



PATHOPHYSIOLOGY OF MYOCARDIAL ISCHAEMIA

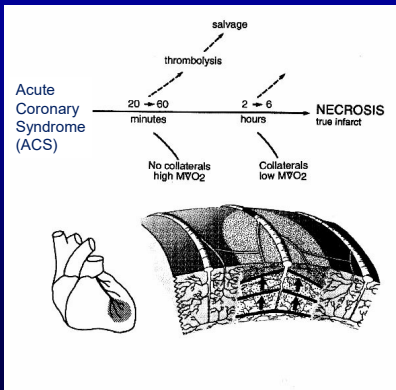


Atherosclerotic plaque

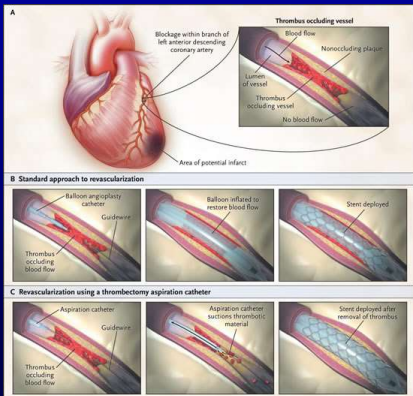


Myocardial necrosis (infarction)

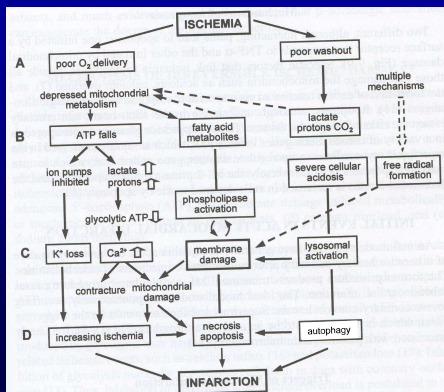
Possible outcomes of myocardial ischaemia



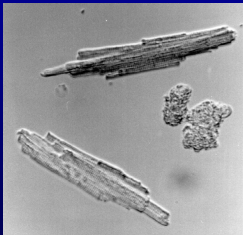
Improving Reperfusion in Patients with Myocardial Infarction



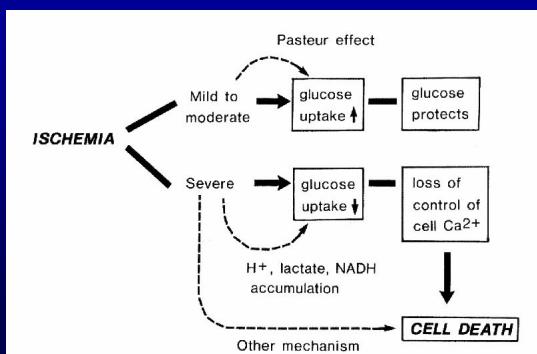
Ischaemia and infarction



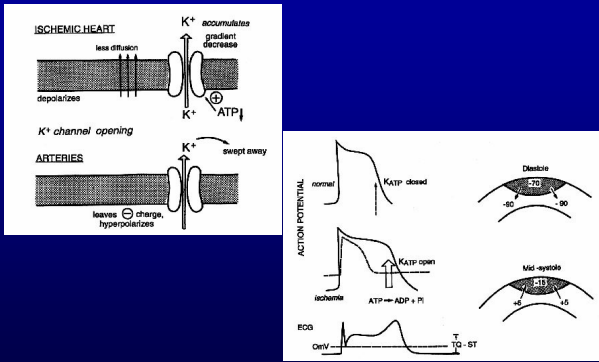
How many cardiomyocytes do you see?



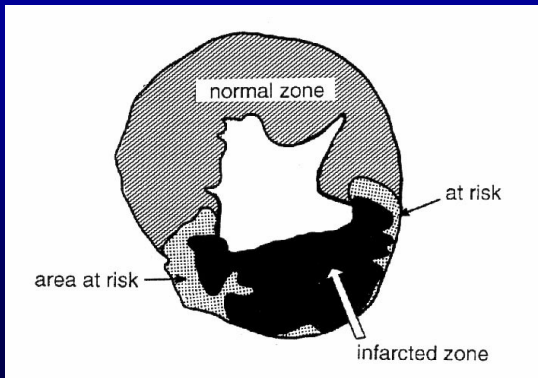
Ischaemic tolerance and glucose homeostasis



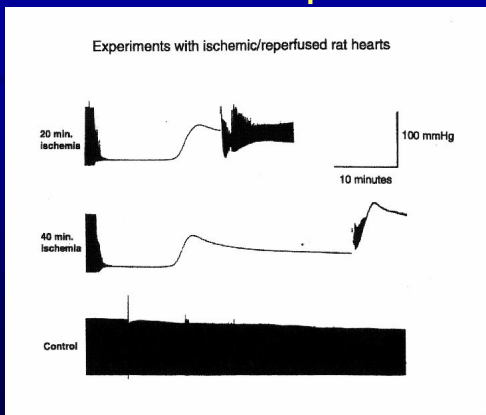
Electrical changes during ischaemia



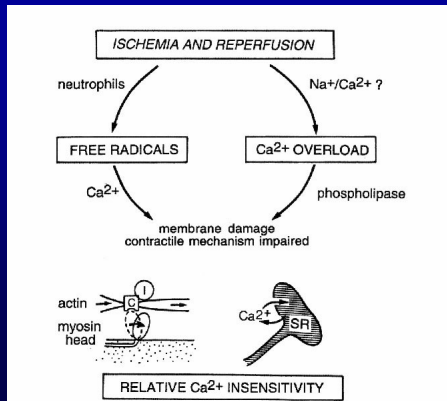
Area at risk



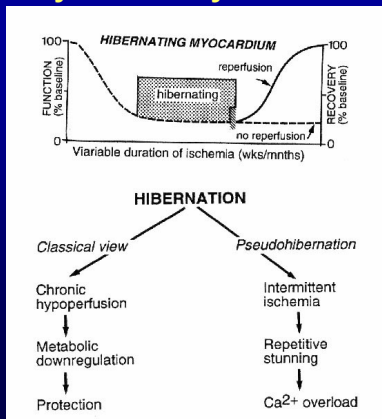
Ischaemia and reperfusion



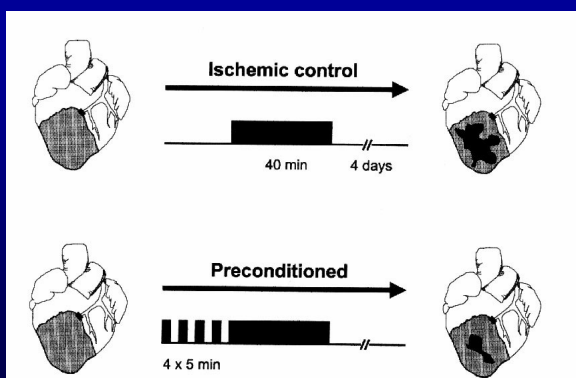
The mechanism of myocardial stunning



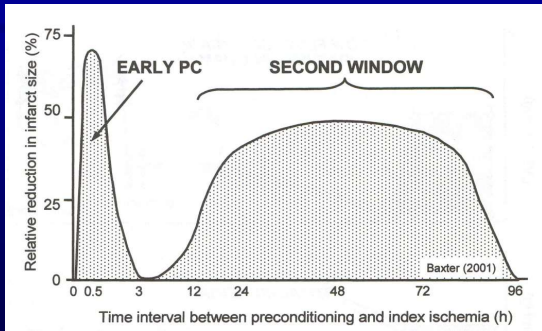
Myocardial hibernation



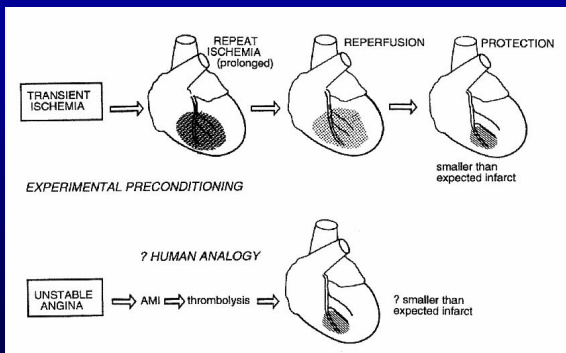
Ischaemic preconditioning



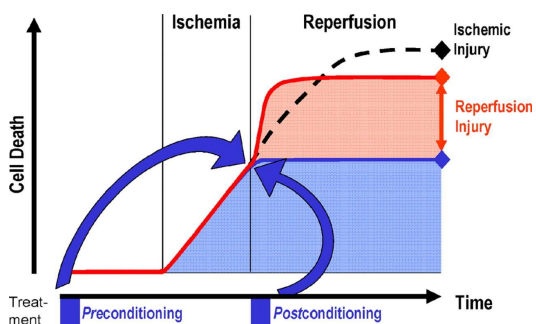
Two phases of preconditioning (PC) early and late



Preconditioning at the clinical settings



Cardioprotection vs. ischemia/reperfusion injury



Copyright © 2005, European Society of Cardiology. David Garcia-Dorado, and Hans Michael Piper Cardiovasc. Res. 2006;69:1-3

The mechanism of ischaemic preconditioning

