

RITMUSZAVAROK EKG VIZSGÁLATA I.

(SUPRAVENTRICULARIS INGERKÉPZÉSI ZAVAROK)

DEBRECENI EGYETEM
ÁLTALÁNOS ORVOSTUDOMÁNYI KAR
KLINIKAI FIZIOLÓGIAI TANSZÉK



Általános szempontok

- **P-hullám, PP-távolság, P-hullám és QRS-komplexusok, QRS-morfológia**
- **tengelyállás, tengelyállás változása**
- **standard II-III, aVR, aVF, V1-V2 elvezetések különösen fontosak**
- **a pitvar retrográd aktivációja II-III-aVF: negatív P, V1: pozitív P-hullámot eredményez (P')**

Supraventricularis (SV) ingerképzési zavarok

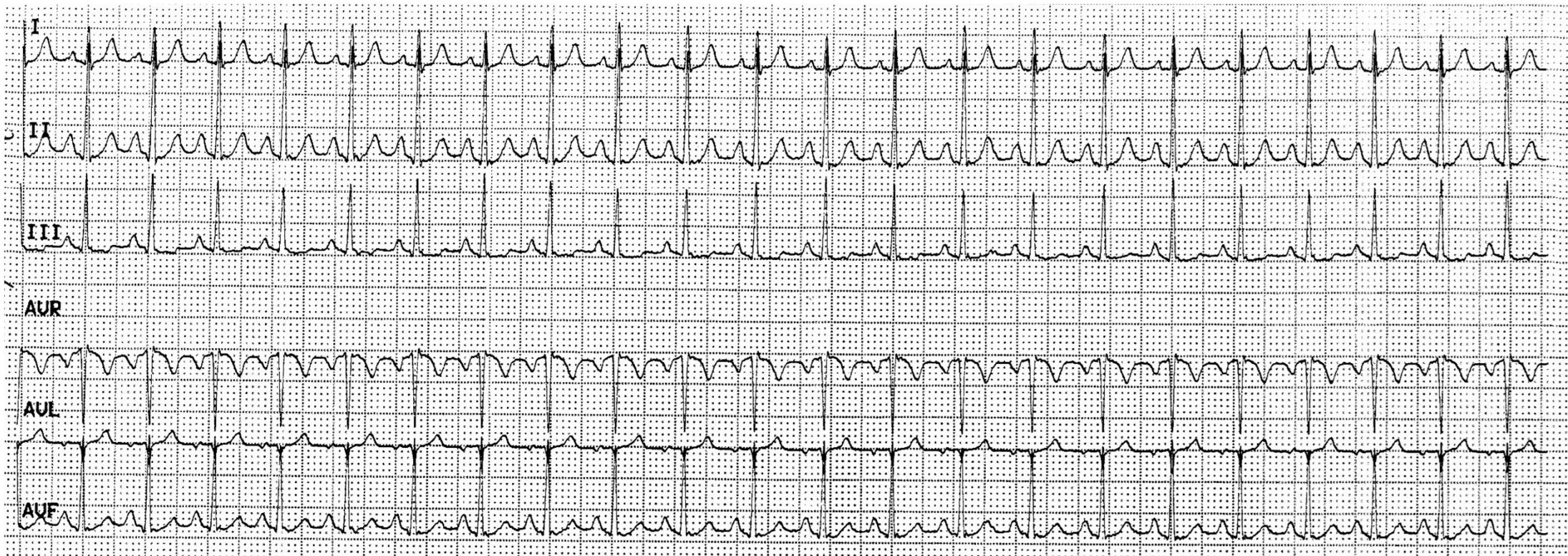
Nomotop SV ingerképzési zavarok

Heterotop SV ingerképzési zavarok



1. Sinustachycardia (frekvencia: 100-180/perc)
2. Sinusbradycardia (frekvencia < 60/perc (< 50/perc))
3. Sinuscsomó reentry tachycardia
4. Vándorló ingerképzés
5. Sinusarrhythmia
6. Sinuscsomó betegség (Sick sinus syndroma)

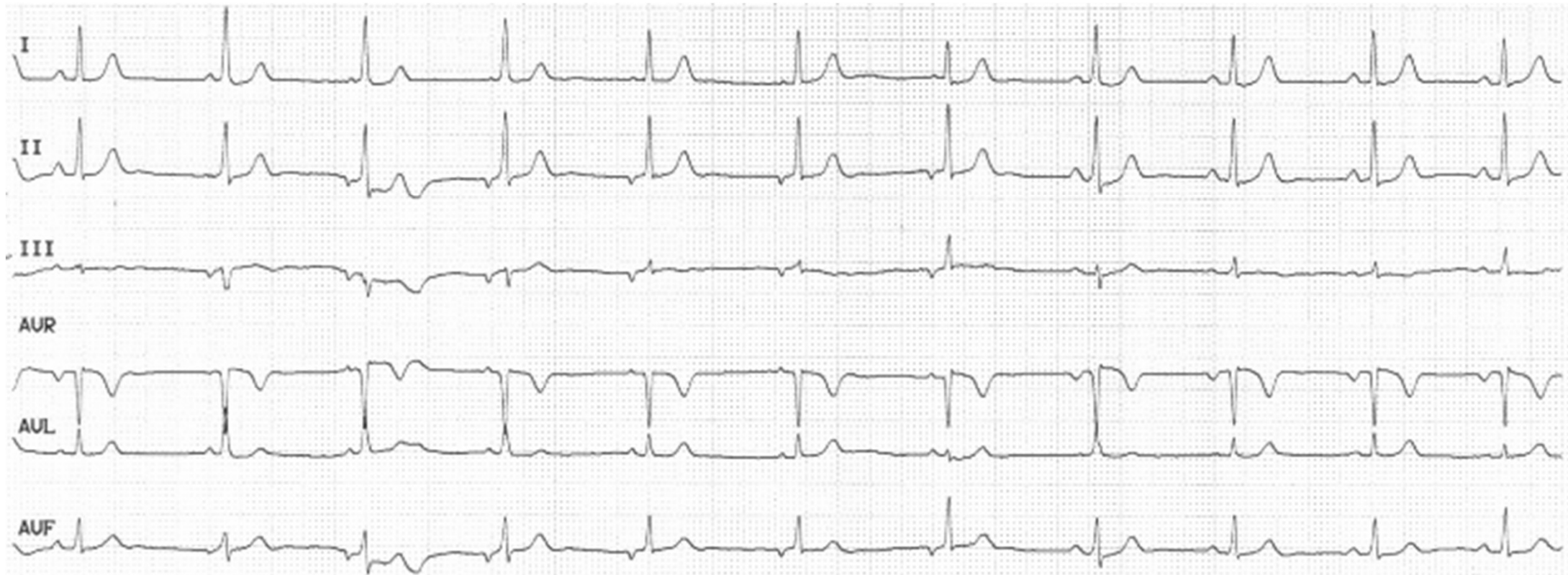
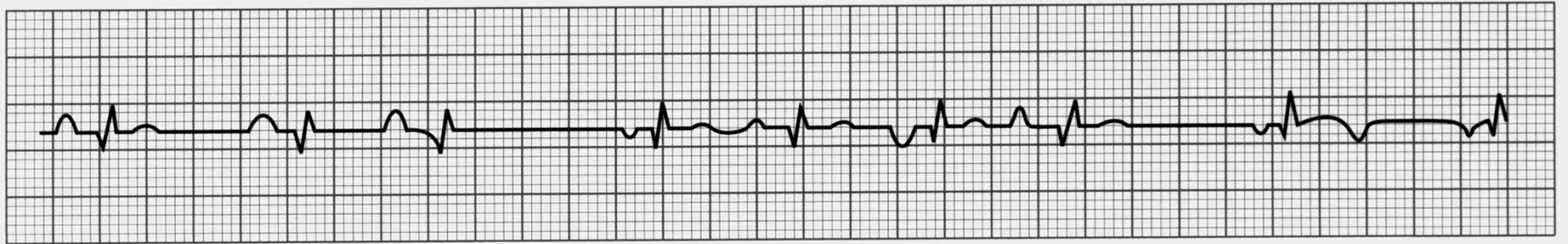
Sinustachycardia



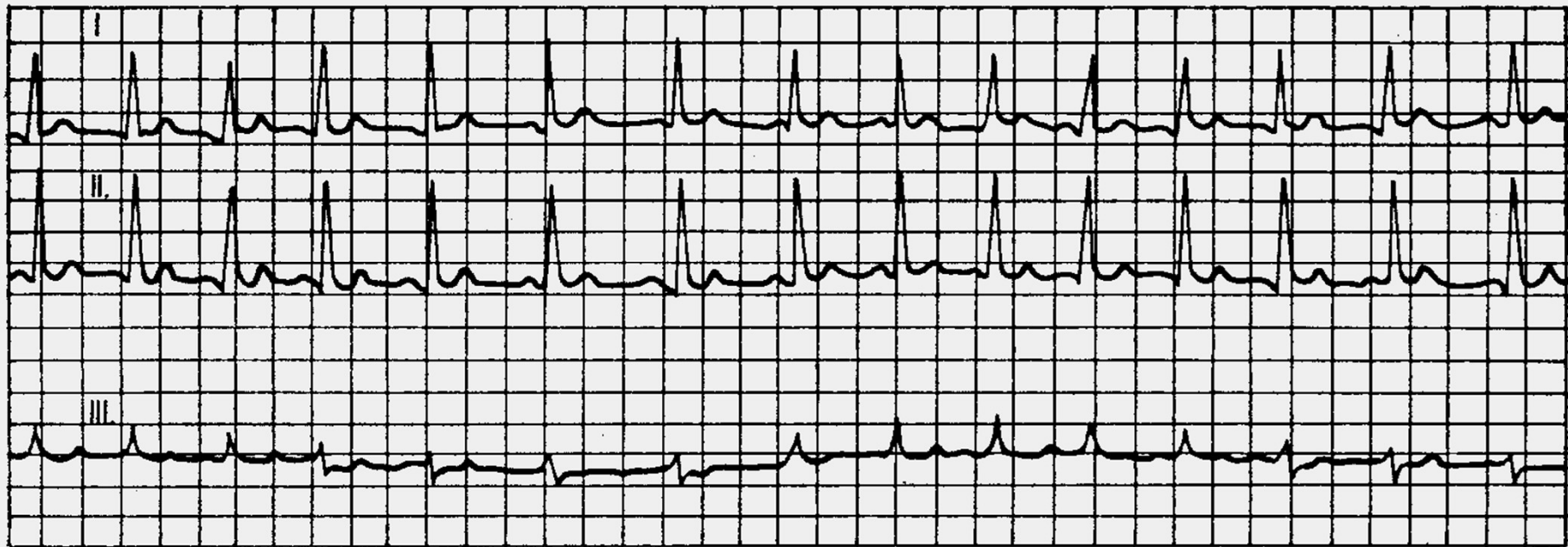
Sinusbradycardia



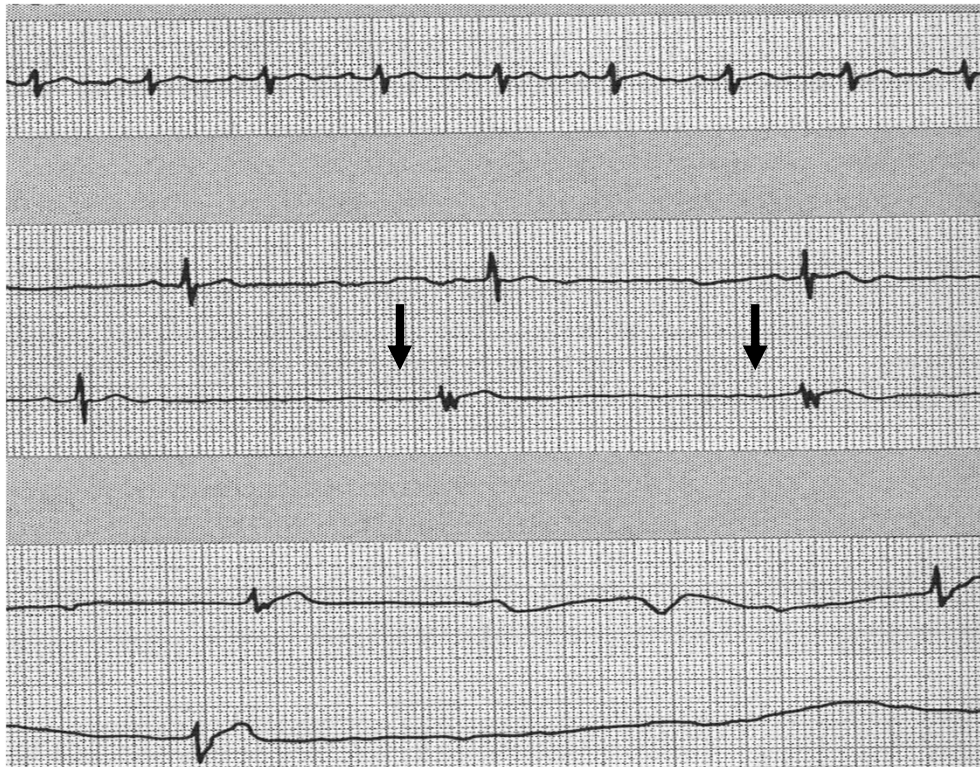
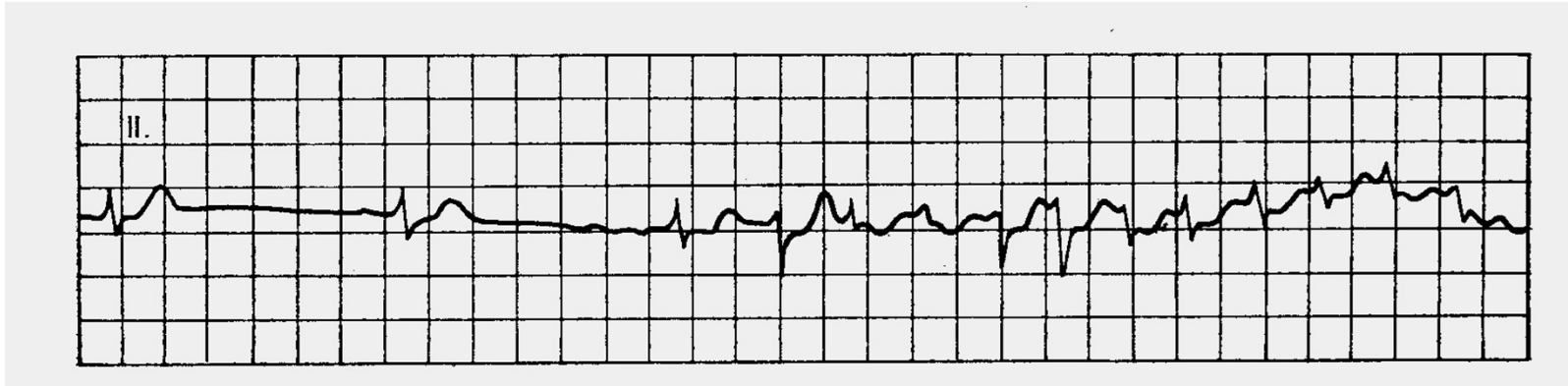
Vándorló ingerképzés



Fázisos (légzési) sinus arrhythmia

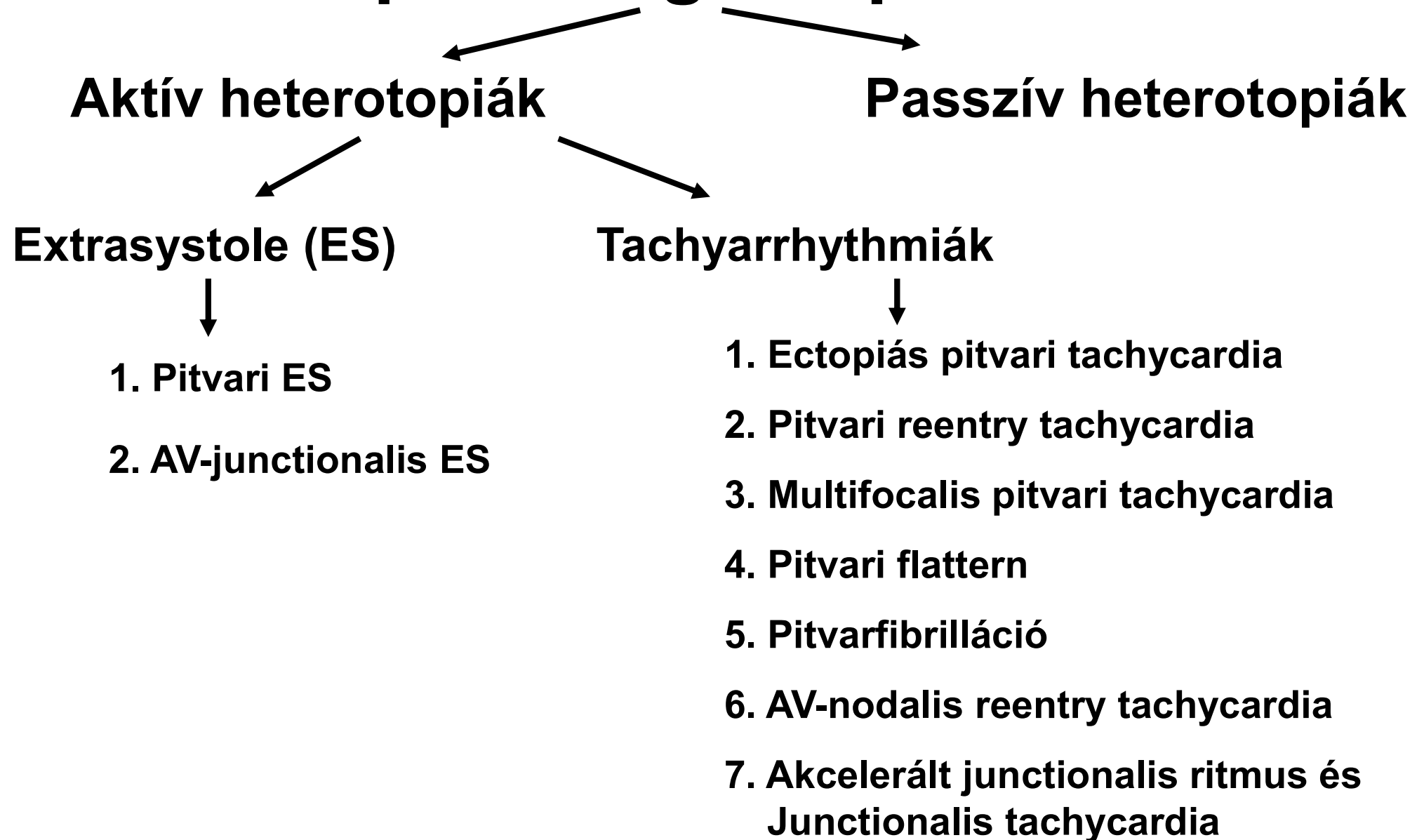


Sick-sinus syndrome



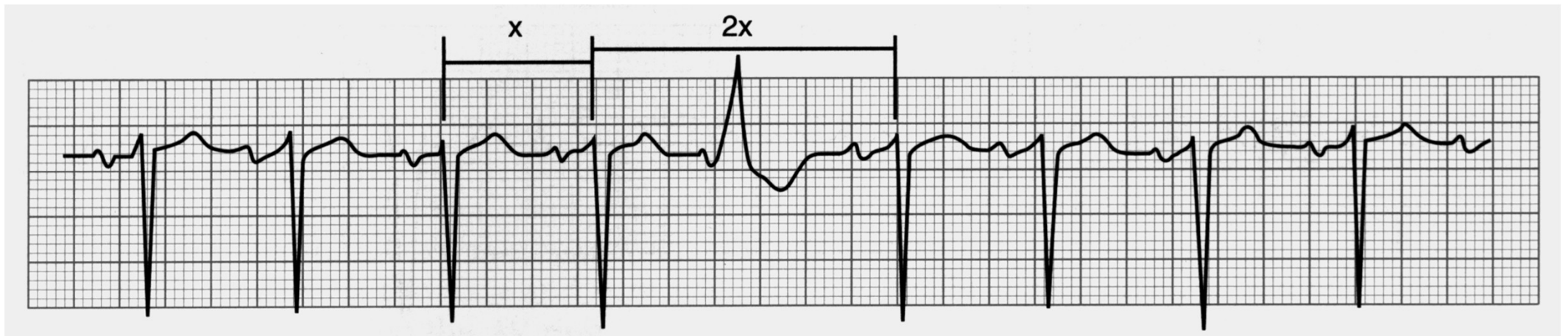
Sinus leállás
(sinus arrest)

Heterotop SV ingerképzési zavarok

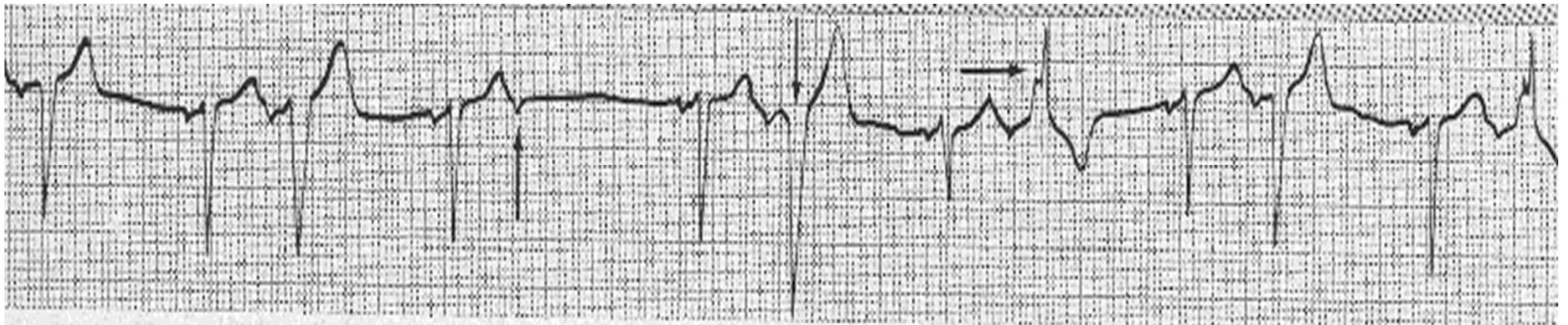
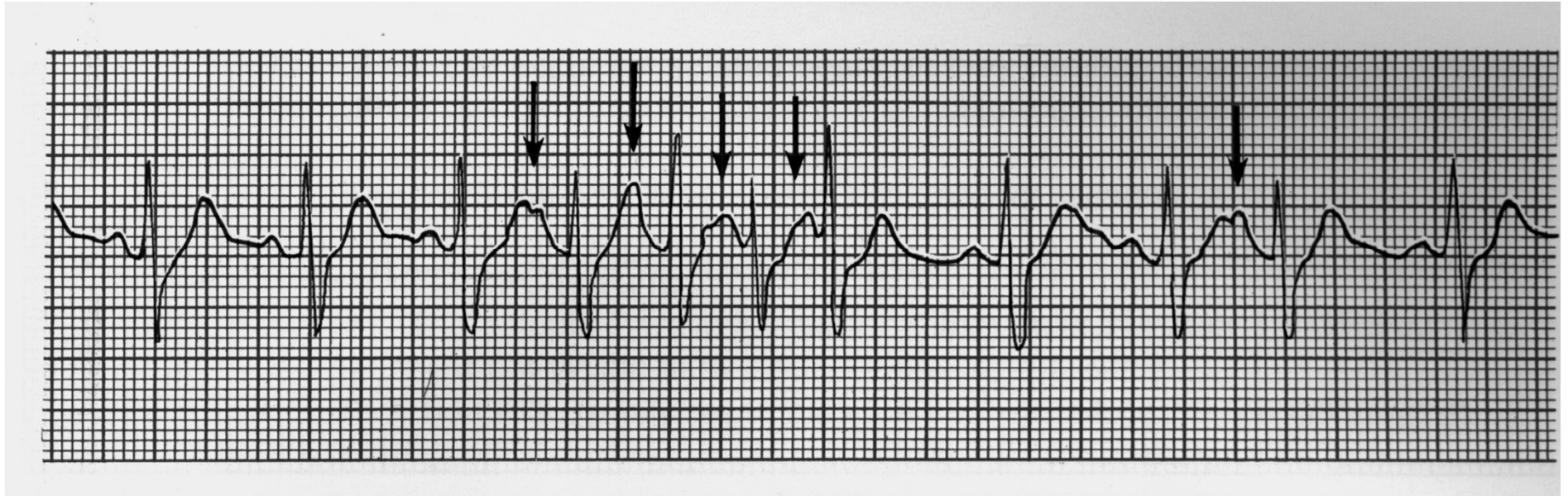


Extrasystole (ES) és kapcsolt fogalmak

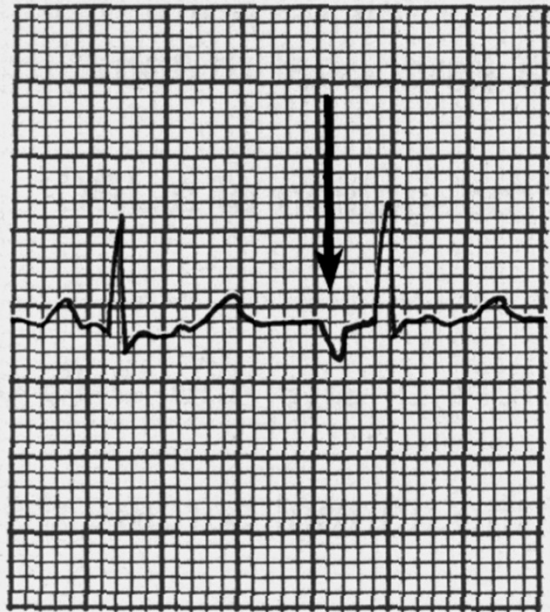
kompenzált ES



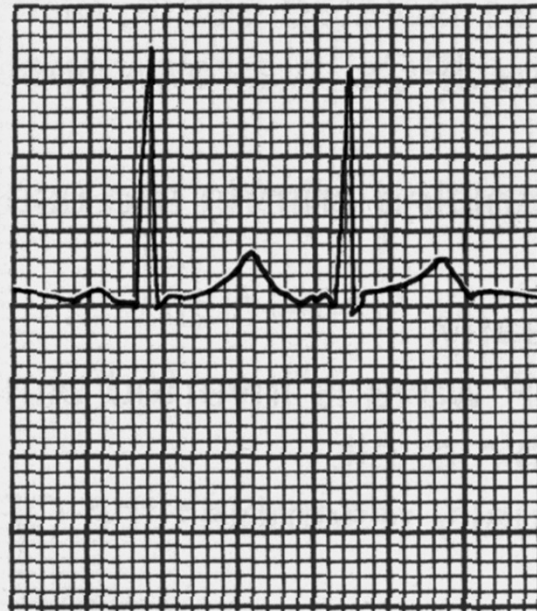
Pitvari extrasystolék



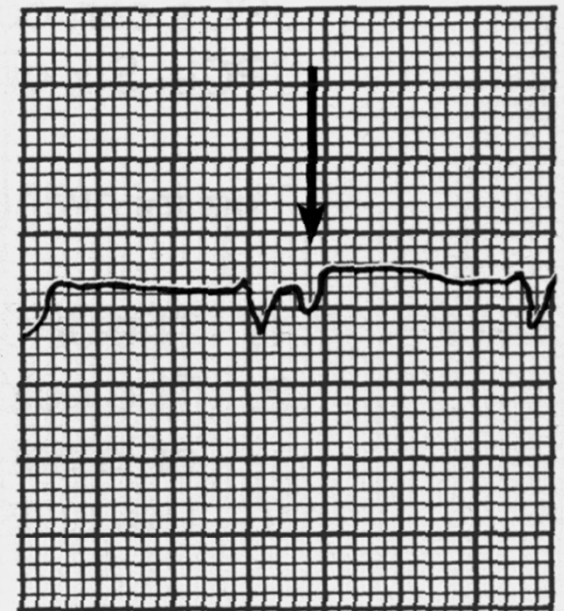
AV-junctionalis extrasystolék



Junkcionális ES
negatív P-hullám a QRS előtt

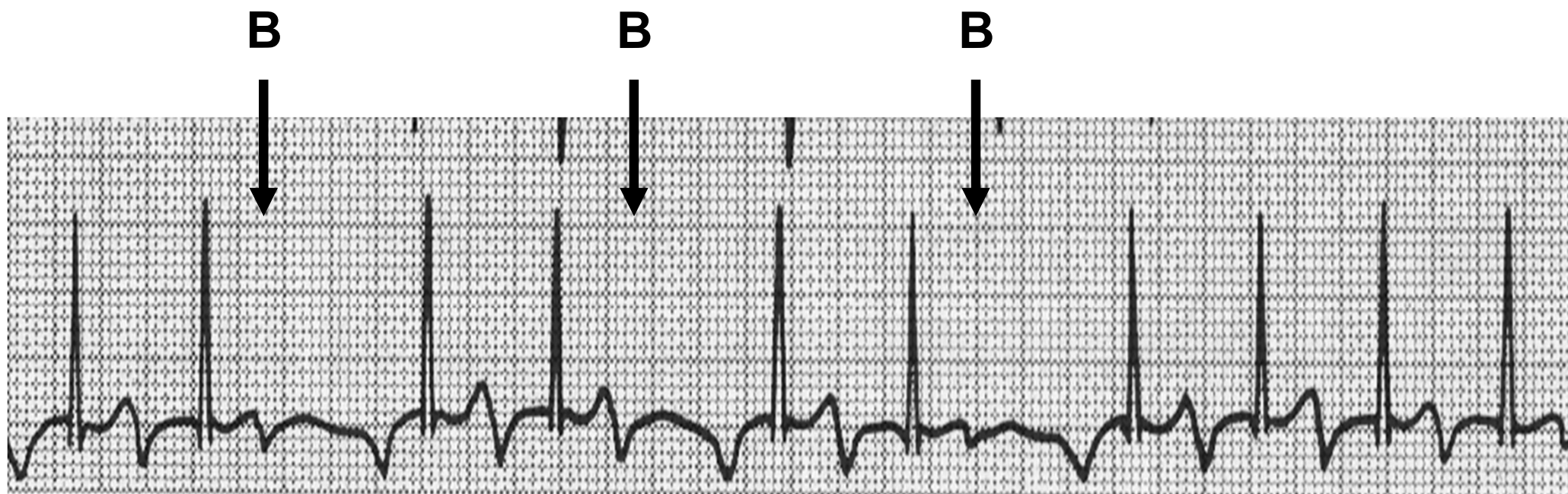


Junkcionális ES
P-hullám nem látható



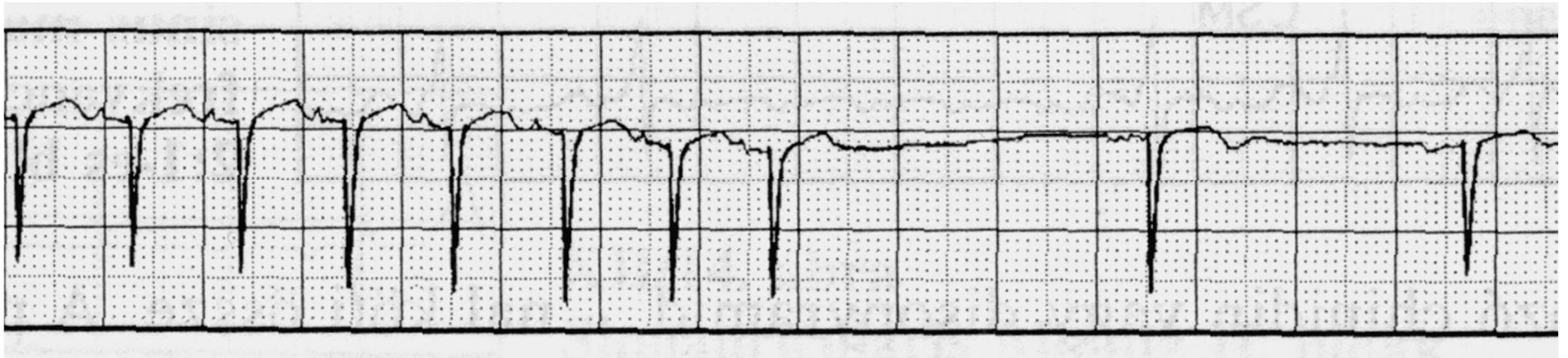
Junkcionális ES
negatív P-hullám a QRS után

Ectopiás pitvari tachycardia

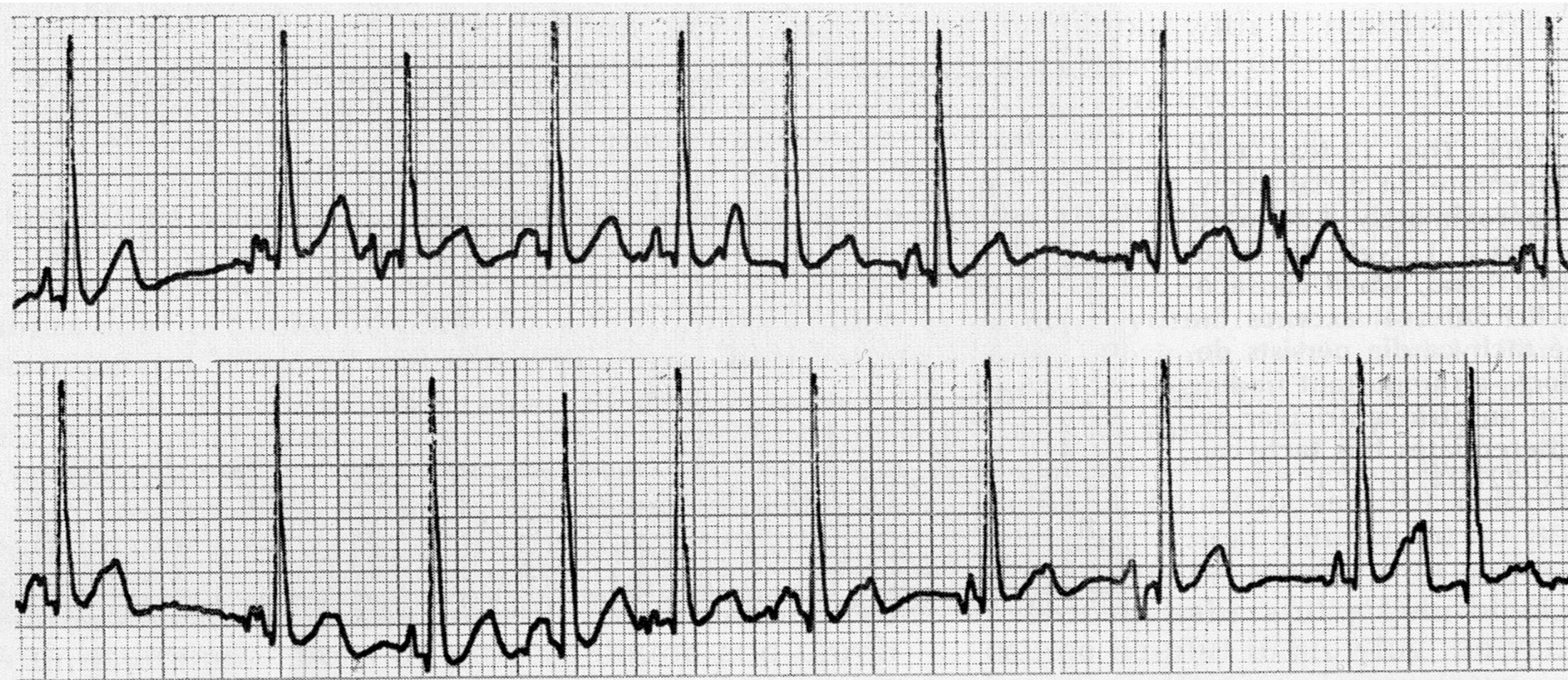


aVF elvezetés

Pitvari reentry tachycardia

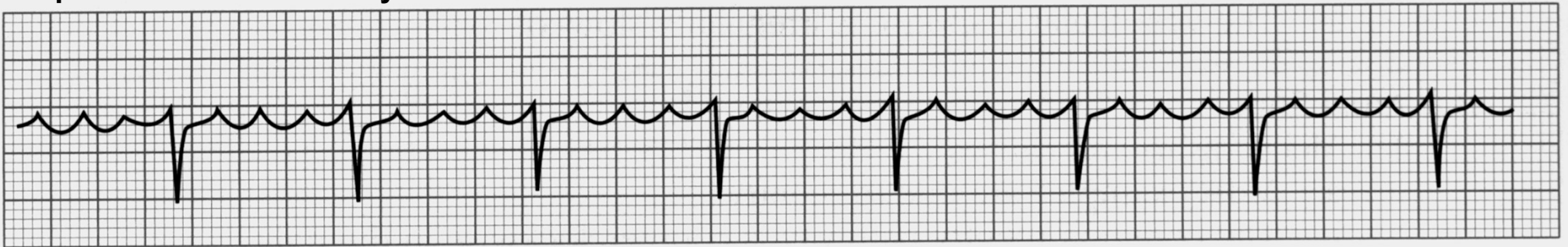


Multifocalis pitvari tachycardia



Pitvari flutter

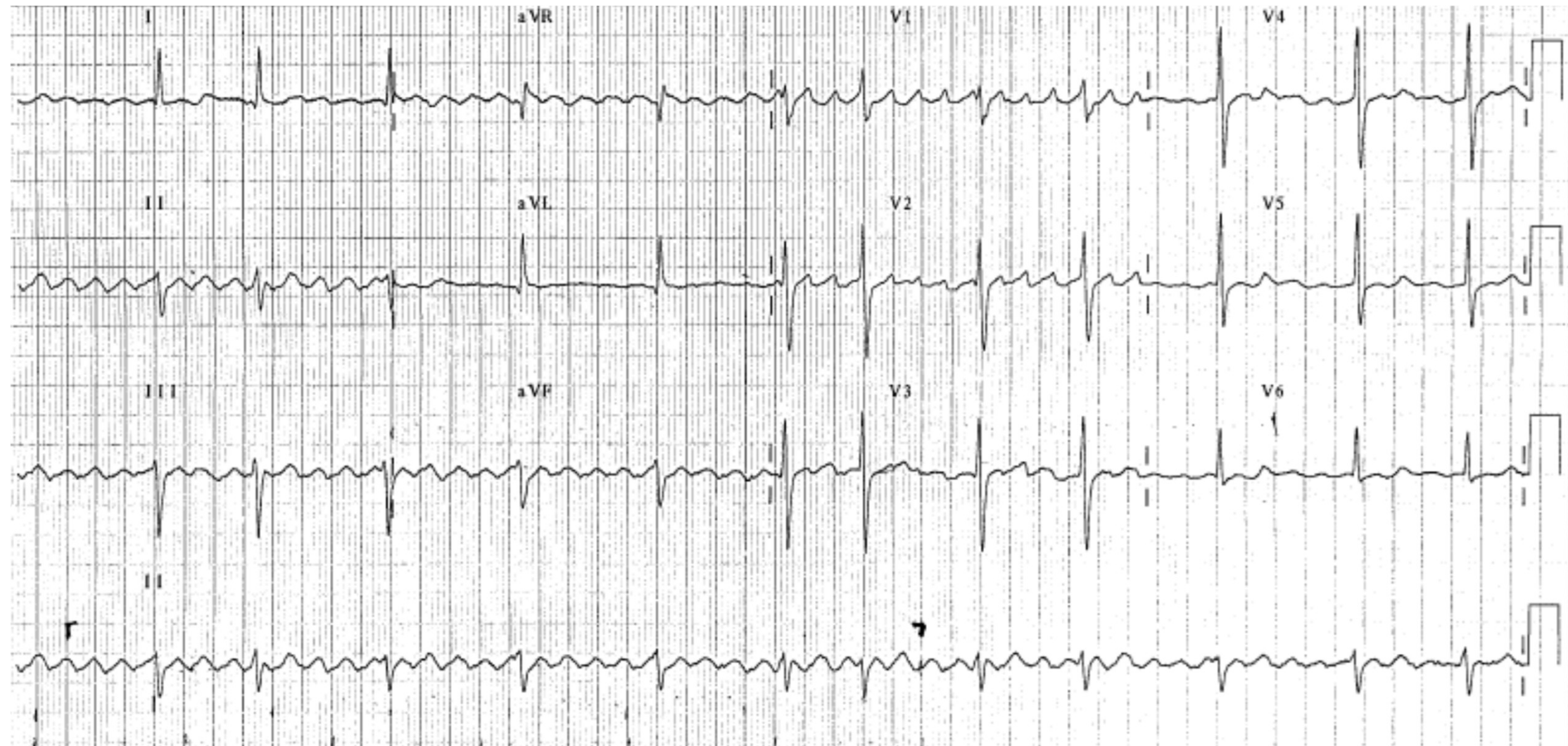
V1: pitvari flutter 4:1 arányú AV átvezetéssel



II: pitvari flutter váltakozó 2:1 és 4:1 arányú AV átvezetéssel

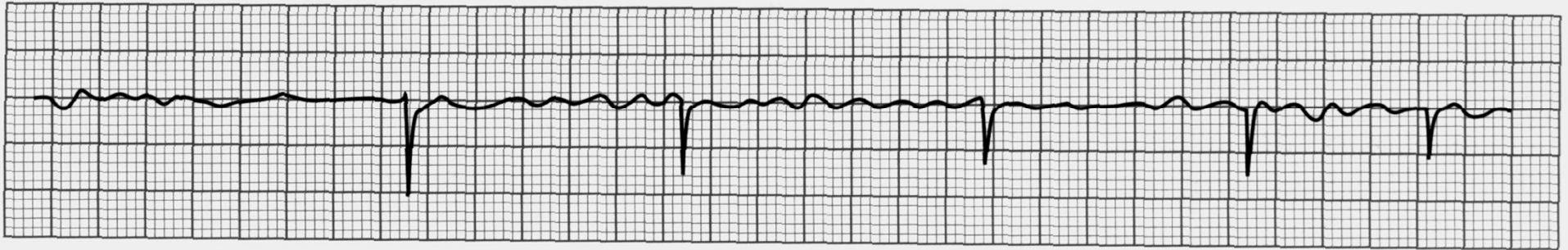


Pitvari flutter váltakozó 2:1 és 4:1 arányú AV átvezetéssel

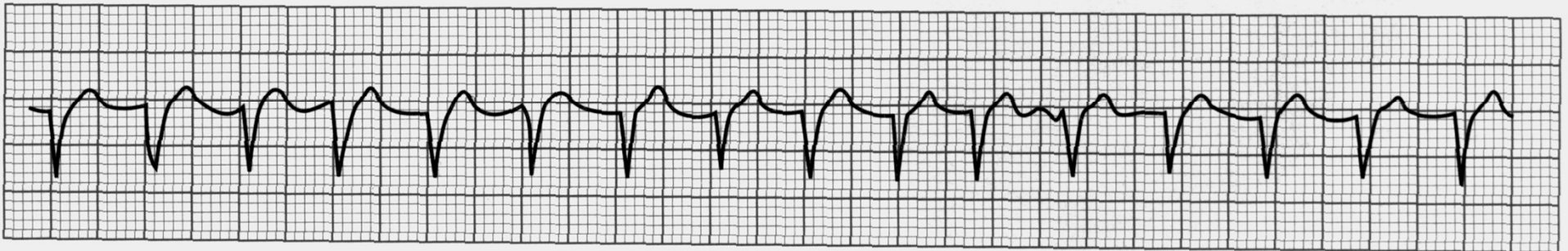


Pitvarfibrilláció

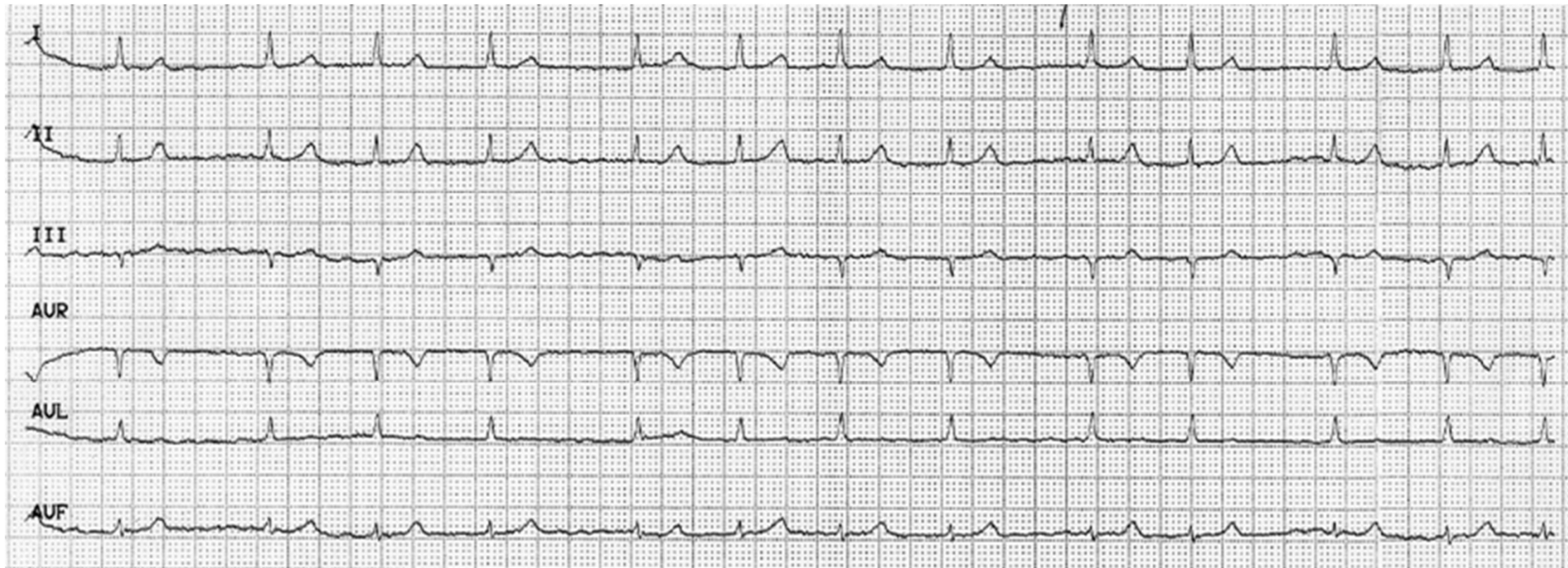
V1: pitvarfibrilláció, alacsony kamrai frekvencia



V1: pitvarfibrilláció, magas kamrai frekvencia

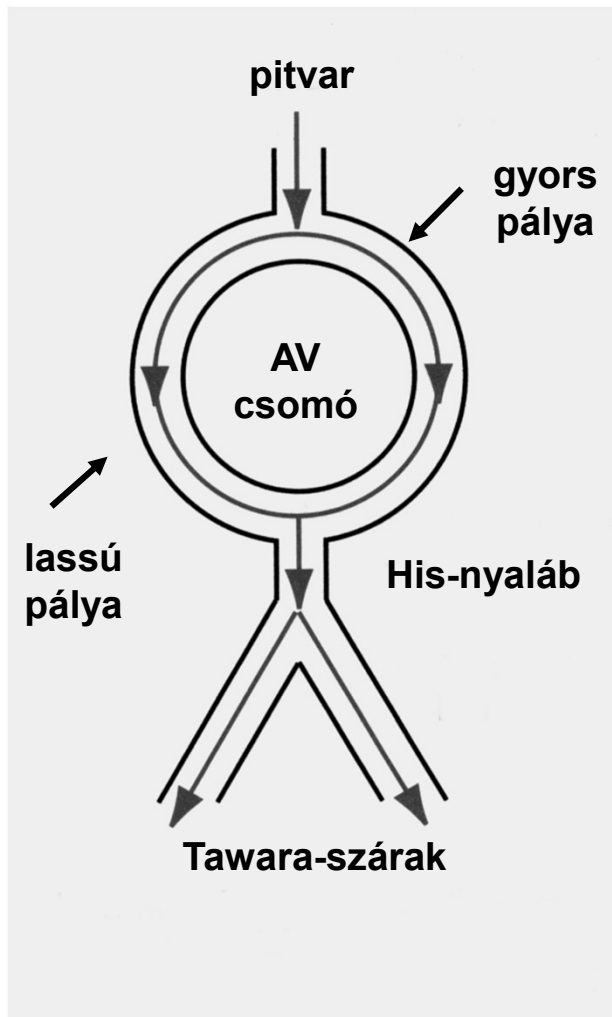


Pitvarfibrilláció

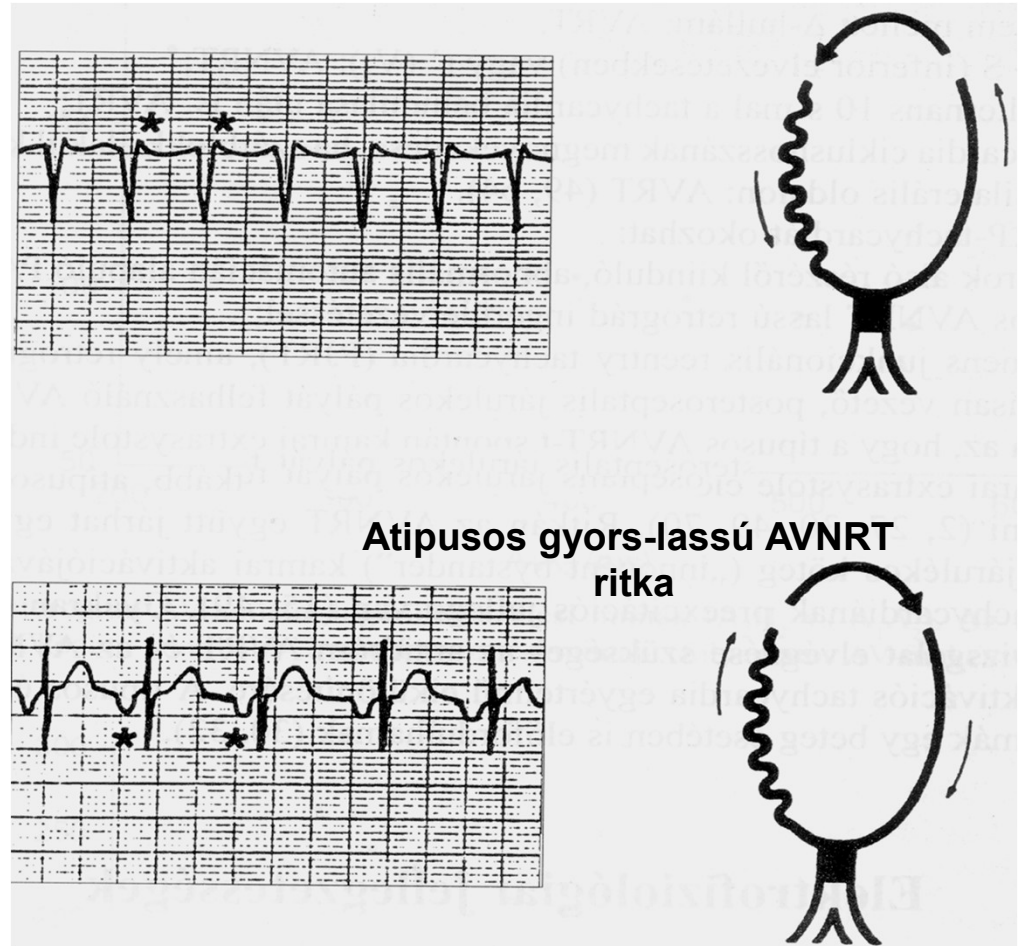


AV-nodalis reentry tachycardia (AVNRT)

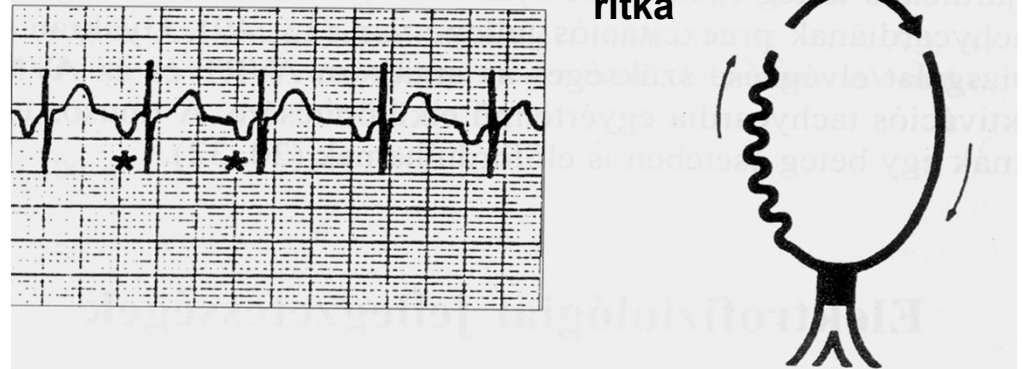
Fiziológias AV-átvezetés



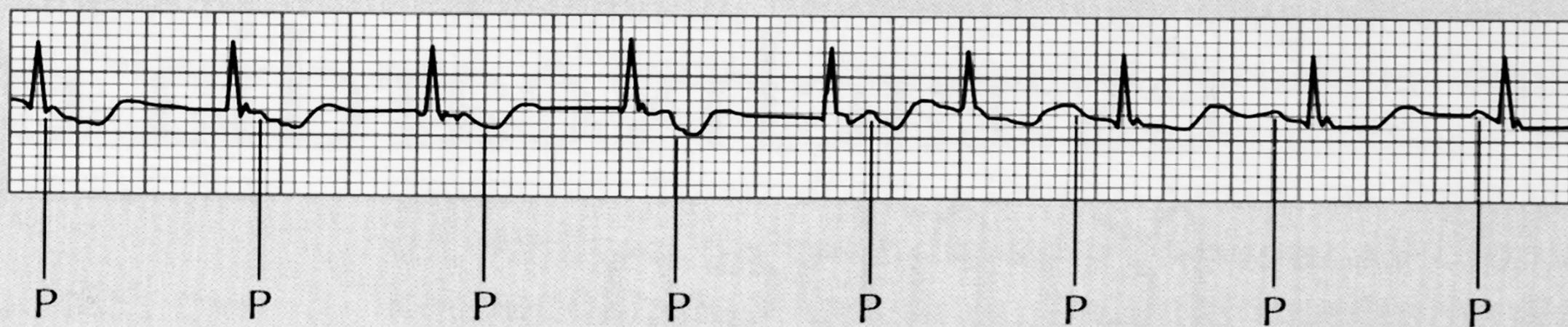
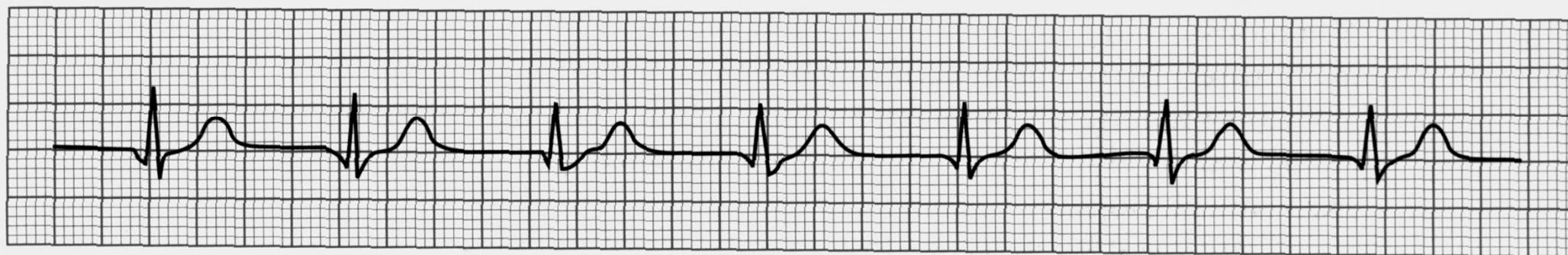
Típusos lassú-gyors AVNRT gyakori



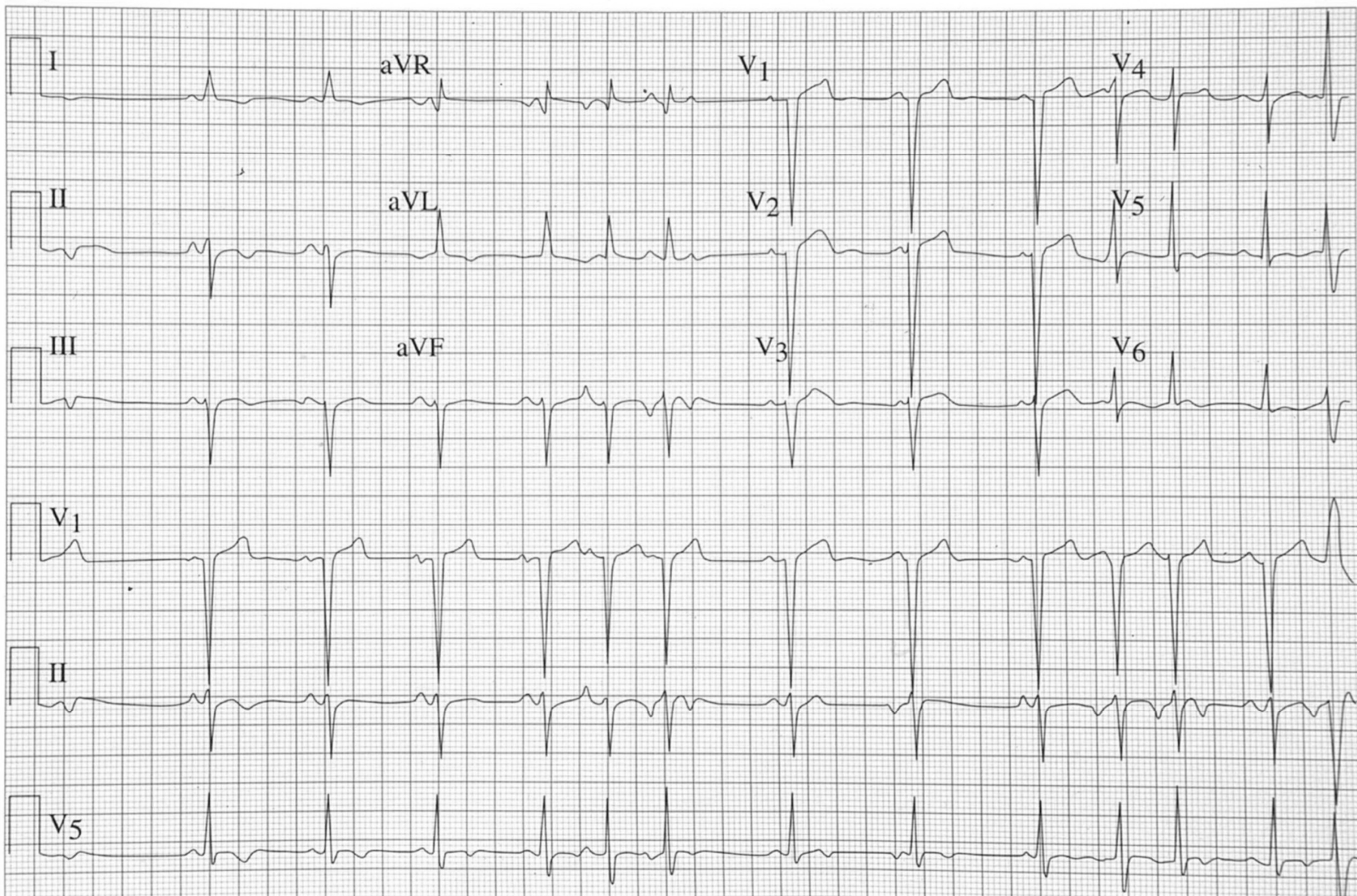
Atipusos gyors-lassú AVNRT ritka



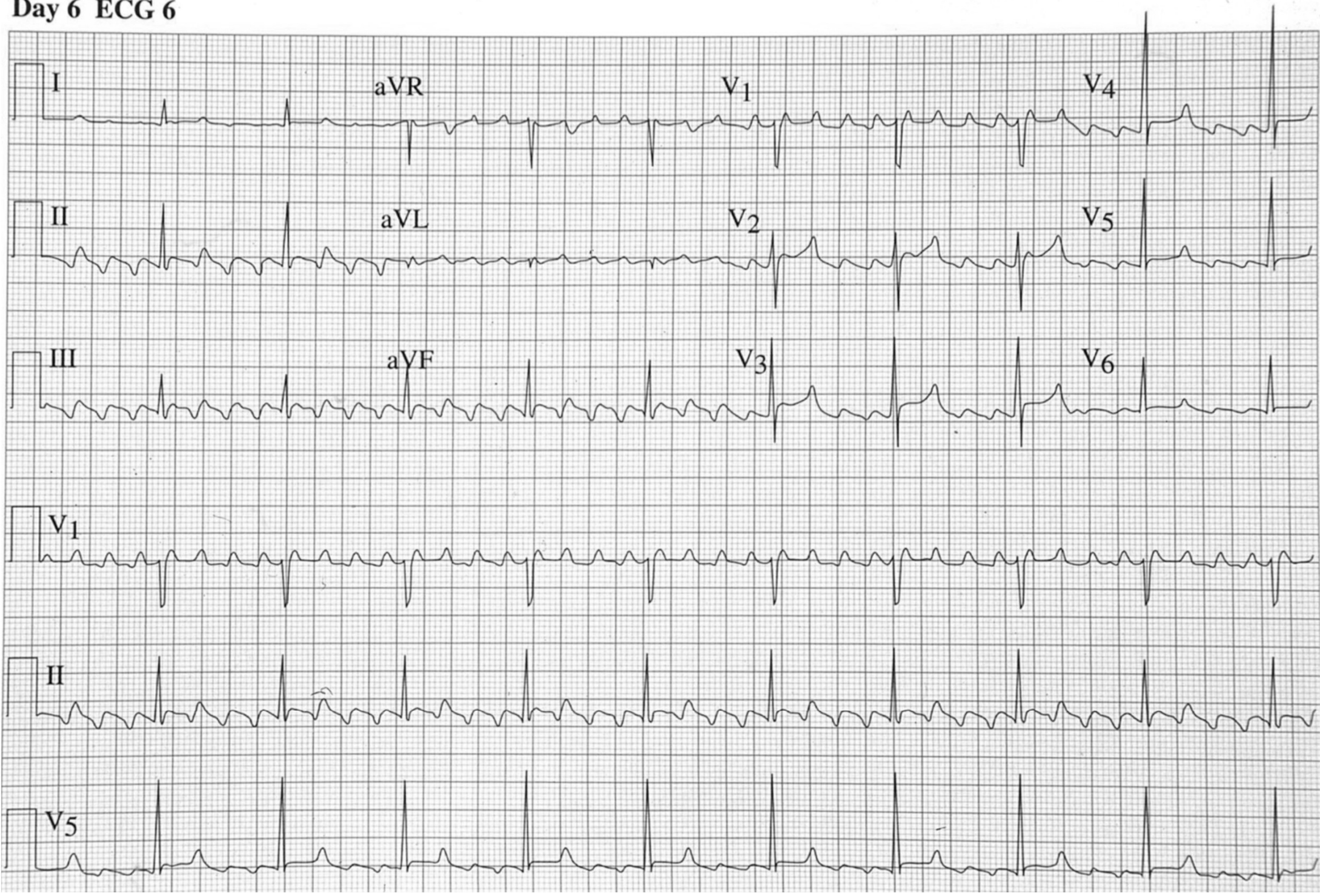
Akcelerált junctionalis ritmus és junctionalis tachycardia



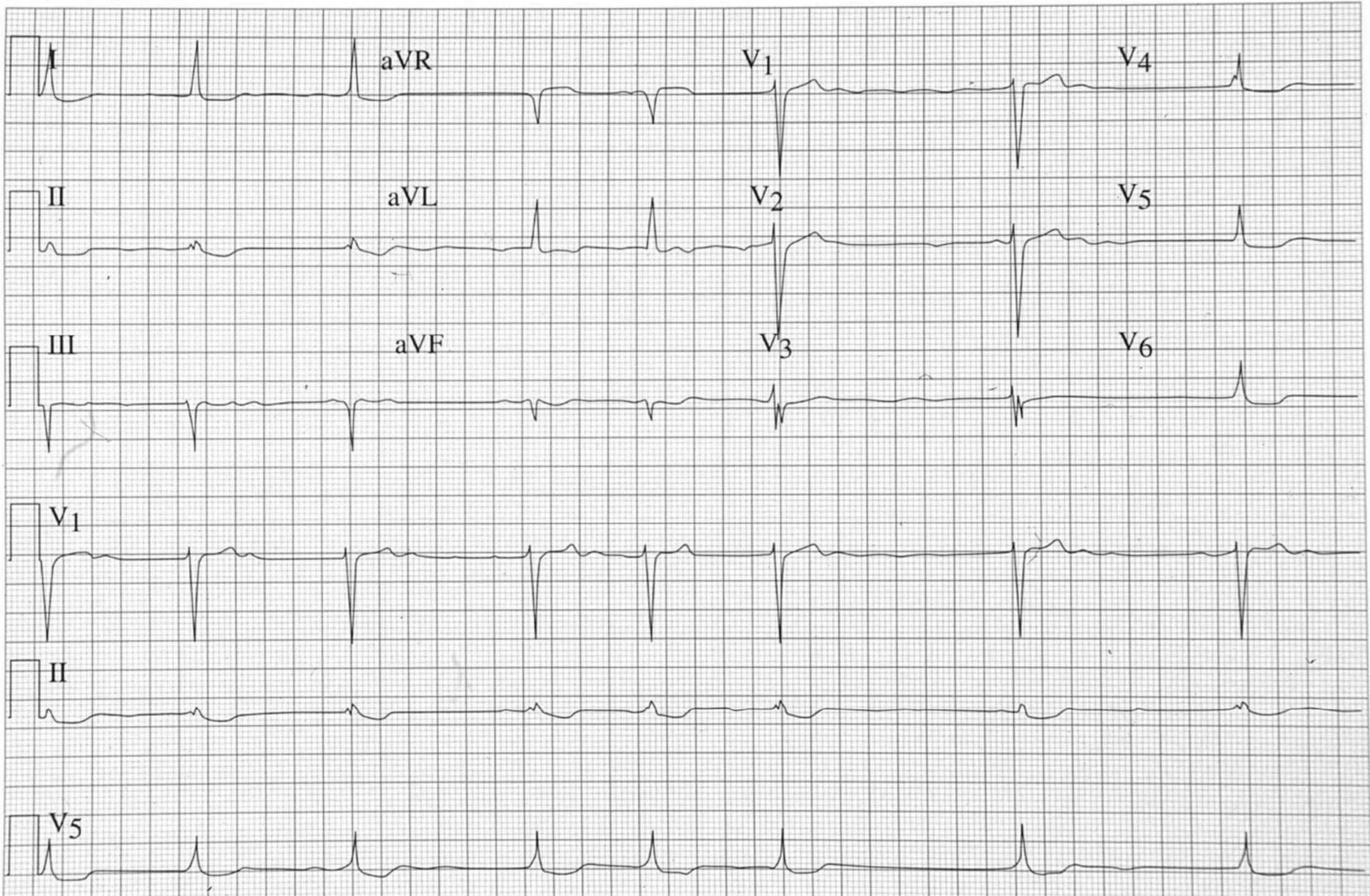
Day 6 ECG 14



Day 6 ECG 6



Day 6 ECG 17



Day 6 ECG 20

